

CONCEPT™ CAVITY SLIDER

The Triline Concept™ cavity slider has been designed to offer an architectural flush finish look, with no hanger plates or fixing screws visible above the door.



...maximising space,
minimising intrusion

In Detail

As with all Triline cavity sliders, the Concept™ range has been designed with robustness and strength being key features to ensure your project is complimented with a reliable, quality product.

The compact structural aluminium track profile ensures that the wheels cannot disengage and serves to reduce the risk of debris in the track, stopping the wheels from jumping, as any debris is less likely to accumulate on the raised rails.

The Concept™ cavity slider can be supplied with two optional beads to cover the clearance at the top of the door, providing a look similar to a regular swing door fitted with door stops.



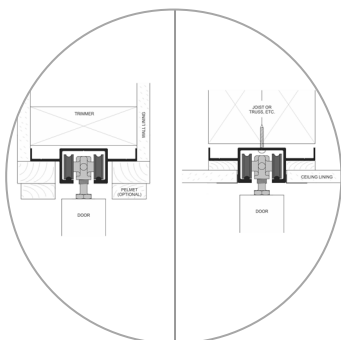
Raised rail track profile
& anodised aluminium
for a smooth ride



120kg cast stainless steel
makes a durable solution for
high traffic applications



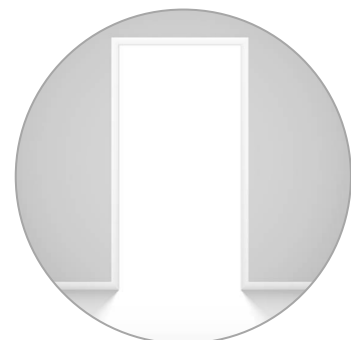
Add our soft close damp-
er to ensure a quiet and
soft stop every time.



Available as standard
height or full height units



Standard carrying capacity
is 80kg. Max door weight is
120kg



Max Door Height: 3000mm

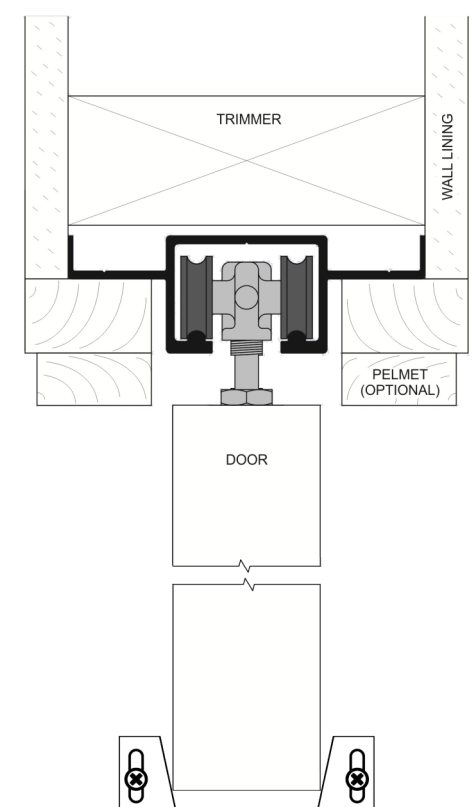
Max Door Width: 2000mm

N.B. Max door height and width may vary
depending on the weight of the door.



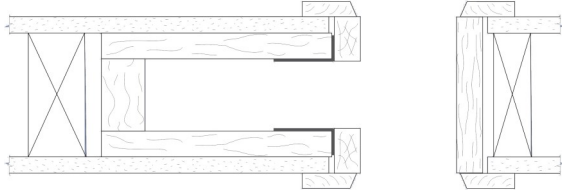
The Concept™ unit allows for a minimal 10-15mm gap between the track and the top of the door. Perfectly suited to full height openings, it is also available for standard height doors as single or double door units.

To compliment the Concept™ range, Triline can also offer various options for doors to suit providing a complete package. Doors can be rebated for hardware if required, saving time during installation. The Concept unit is the perfect solution to high use areas in residential, commercial and industrial applications.



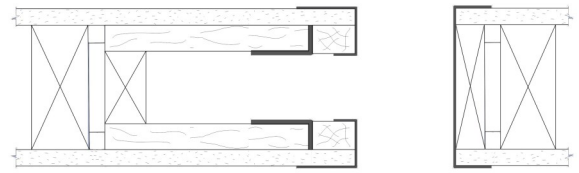
Trim Options

ARCHITRAVES



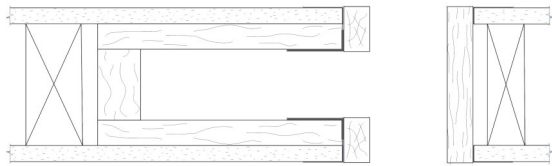
This is our standard setup for our cavity units. Split jambs, heads and closing jamb are all made to be fitted with architraves which are supplied by the builder. Architrave height also matches standard swing door architrave height to create a seamless look when side by side.

EZYJAMB cavkit



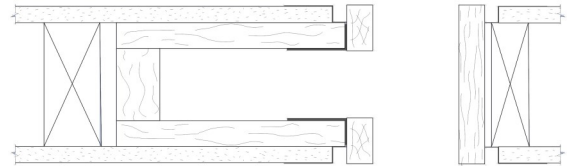
Manufactured from high-performance steel, the metal frames trim and cap the plaster edges around the door penetration. The cavity jambs are made smaller than standard for ease of wrapping over plasterboard. Triline supply the Ezy-Jamb flush finish system to suit your cavity slider to streamline your installation process.

P25 STOPPING ANGLE



The jambs are all made 3mm wider to sit flush with the P25 angle once this has been trowelled in and painted to ensure a clean finish to the doorway. The P25 angle isn't supplied with the cavity sliding door unit.

P50 SHADOW LINE



Also requires the jambs to be made slightly wider to align with the metal P50 shadow line angle. This unique shadow line adds another whole dimension to the aesthetics of your doorway. P50 angle isn't supplied with the cavity sliding door unit.

OPENING PREPARATION

OPENING WIDTH (stud to stud)

Single Door: 2 x door width + 60mm

Double Door: 4 x door width + 60mm

OPENING HEIGHT (floor to trimmer)

Height: door height + 75mm

Frames are designed to fit onto the floor surface (i.e. concrete/timber) before floor coverings.

CLEARANCES:

Between track & door: 13mm +/- 3mm

Below door: 18mm +/- 3mm

