

HERCULES™ CAVITY SLIDER

The Triline Hercules™ cavity slider is designed for doors up to 120kg in weight for residential and commercial applications.



...for extra strength
and durability

2019

PRODUCT INFORMATION

In Detail

As with all Triline cavity sliders, the Hercules™ range has been designed with robustness and strength being key features to ensure your project is complimented with a reliable, quality product.

The compact structural aluminium track profile ensures that the wheels cannot disengage and serves to reduce the risk of debris in the track causing the wheels to jump, as any debris is less likely to accumulate on the raised rails.

The Hercules™ hangers structural construction, steel fixing plates and hanger bolts ensure long life. Our proven 4-wheel reinforced nylon outer tyre hanger technology, with chrome steel precision bearings, is standard. This combination, with the unique *Raised Rail* track profile, offers years of silent smooth operation and superior rolling performance.



Raised rail track profile
& anodised aluminium
for a smooth ride



4-wheel
reinforced
hanger



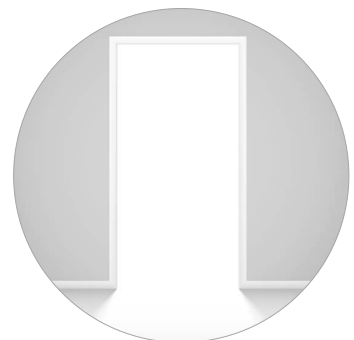
32mm slim look
pelmet



Add our soft close damp-
er to ensure a quiet and
soft stop every time.



Standard carrying capacity
is 80kg. Max door weight is
120kg



Max Door Height: 2700mm

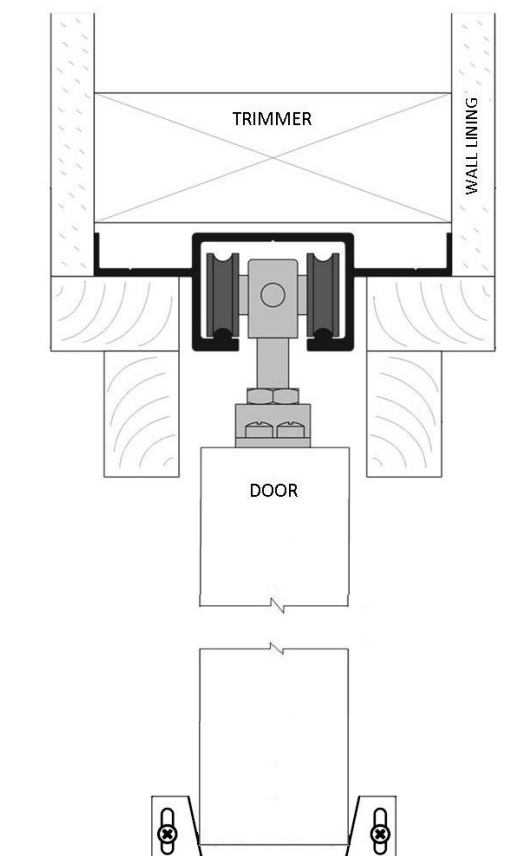
Max Door Width: 1500mm

N.B. Max door height and width may vary
depending on the weight of the door.



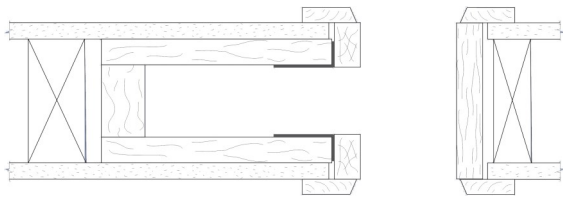
The Hercules™ cavity system is suitable for single doors sliding to one side or double doors sliding either side on a single track.

The Hercules™ cavity slider allows for simple height adjustment, by simply unscrewing the removable pelmet and raising or lowering the hanger bolt. The fixing plate also features two anti-slip tabs to prevent the door from disengaging from the hanger bolt during adjustment.



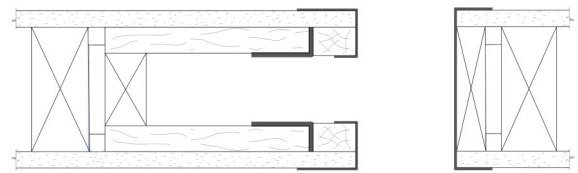
Trim Options

ARCHITRAVES



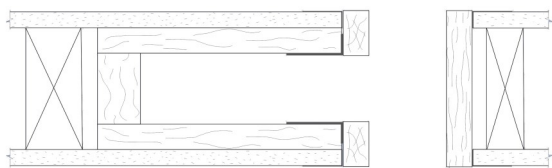
This is our standard setup for our cavity units. Split jambs, heads and closing jamb are all made to be fitted with architraves (supplied by others). Architrave height also matches standard swing door architrave height to create a seamless look when side by side.

EZYJAMB cavkit



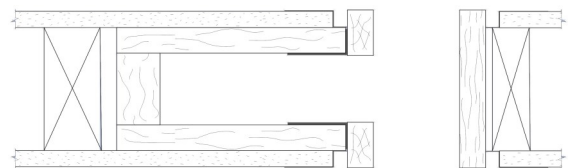
Manufactured from high-performance steel, the metal frames trim and cap the plaster edges around the door penetration. The cavity jambs are made smaller than standard for ease of wrapping over plasterboard. Triline can supply the EzyJamb flush finish system to suit your cavity slider to streamline your installation process.

P25 STOPPING ANGLE



The jambs are all made 3mm wider to sit flush with the P25 angle once this has been trowelled in and painted to ensure a clean finish to the doorway. The P25 angle isn't supplied with the cavity sliding door unit.

P50 SHADOW LINE



Also requires the jambs to be made slightly wider to align with the metal P50 shadow line angle. This unique shadow line adds another whole dimension to the aesthetics of your doorway. P50 angle isn't supplied with the cavity sliding door unit.

OPENING PREPARATION

OPENING WIDTH (stud to stud)

Single Door: 2 x door width + 60mm

Double Door: 4 x door width + 60mm

OPENING HEIGHT (floor to trimmer)

Height: door height + 75mm

Frames are designed to fit onto the floor surface (i.e. concrete/ timber) before floor coverings.

CLEARANCES:

Between track & door: 13mm +/- 3mm

Below door: 18mm +/- 3mm

