



know & love
timber



COMPLETE PROFILE RANGE



About Porta

We are Porta...the people who know and love timber! We pride ourselves on being one of Australia's leading suppliers of timber products and mouldings to the home improvement, building, trade and commercial sectors.

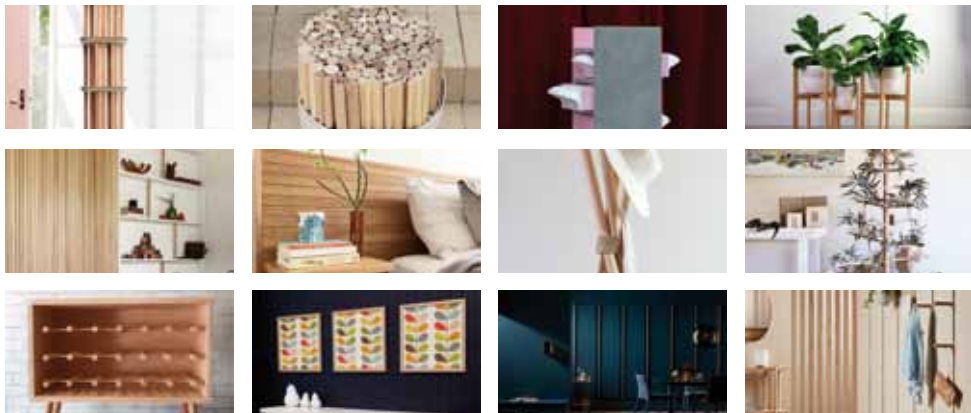
An Australian-owned and operated company, Porta has a rich history spanning over 65 years proudly manufacturing and distributing a broad range of timber products using various local and imported certified timber species.

people who know & love **timber**



Take a look at our website inspiration for great design ideas to redesign, renovate or redecorate. Porta's timber design ideas will help you achieve that stylish look that is functional and is on trend.

www.porta.com.au/design-ideas



f @portatimber **@porta_timber**

Follow us on social media for more inspiration! Share your next project #knowandlovetimber

SUSTAINABILITY COMMITMENT

Porta is committed to using
timbers from responsibly
managed forests and resources.

Porta holds Chain of Custody under these
recognised and accredited organisations:

- Forest Stewardship Council® (FSC®)
- Programme for Endorsement of Forest
Certification (PEFC™)



The mark of
responsible forestry



PEFC™
PEFC/21-31-120

These are the key bodies who promote
stewardship of the world's forests so
that you can be confident Porta's timber
products in your home can be traced to
certified sources.

Certification means that you, our customer
can be rest assured that the timber you
buy is made from responsibly managed
forests. These forests are managed in
a way that ensures both the ecological
health of the forest, and the economic
viability of the operation, while supporting
local economies by ensuring ethical
management practices.

How to Use this Brochure

How to Use Product Codes



The letters correspond to the profile name code.
eg. This is Colonial Architrave.

The number represents the profile size. The first two or three numbers always correspond to the profile HEIGHT (eg. 66mm). The last two numbers always correspond to the profile WIDTH (eg 18mm).

COA-6618



Coloured dots show the available timber species.
eg. This is available in Primed Finger Jointed (FJ) Pine, Meranti and Meranti Veneer.

COA-6618 — Product Code is located below the depiction image.

Timber Colour Key

- Tasmanian Oak
- Clear Grade Pine
- Treated Pine
- Primed Finger Joint (FJ) Pine
- White Wood
- Meranti
- Meranti Veneer
- General Purpose Pine

Find Product in Store

Application —

Moulding Type —

Dimensions —

Timber Species —

Dimensions & Image —

ARCHITRAVE & SKIRTING

Colonial (Tabma AS.2)

66x18mm

Meranti

66mm

18mm

IMAGE NOT TO SCALE

3.6m

COA6618

Timber Colour Key

Certification

Length

Product Code

*Product cards may vary slightly between brand/store chain.



About Porta	2	Picture Framing	
Sustainability Commitment	3	Picture Framing Profiles	16
How to Use this Brochure	4	Dowels	
Our Timbers	6-7	Dowels	17
General Purpose Mouldings		Decorative Ceiling & Wall Trim	
Ovolo	8	Cornice & Scotia	18
Tri Quad	8	Insert Mouldings	18
Quad	8	Chair Rails, Picture Rails & Dado Rails	19
Coverstrap	9	Panel Mouldings	19
Edging & External Corners	9	Timber Lining	
Windows & Doors		Timber Lining Boards	20
Window & Door Profiles	10	Outdoor Timber	
Door Jambs	11	Outdoor Trim	21
Dressed Boards		Dressed All round (DAR)	21
Dressed All Round	12-13	Handrails	
Architraves & Skirting		Handrails	22
Architraves & Skirting Profiles	14-16	How to install Porta Handrail System	23

Our Timbers



Primed FJ Pine



Clear Pine



Treated Pine

Botanical Name

Pinus Taeda

Pinus Radiata

Pinus Radiata

Key Features

Pre-coated with a specially developed water-based primer in a matte white finish. Porta's Primed FJ mouldings are ready to paint with either acrylic or oil-based paints.

A knot-free product which is easier to work than knotty pine. It can be successfully stained, painted, waxed or colour-washed.

H3 rated, impregnated with copper fixed waterborne preservatives increasing longevity above ground against termite attack, rot, decay and weather for 30+ years.

Classification

Softwood

Softwood

Softwood

Density

550 Kg/m³

550 Kg/m³

550 Kg/m³

Durability In Ground

Class 4
< 5 years

Class 4
< 5 years

Class 4
< 5 years

Durability Outside Above Ground

Class 4
< 7 years

Class 4
< 7 years

ACQ Treated to H3 - 30 Years

Strength Group Seasoned SD1-8 (1 is strongest)

SD6

SD6

SD6

Applications

Indoor
Suitable for wet areas

Indoor
Suitable for wet areas

Outdoor
Above Ground

Finish

Paint

Stain

Stain or Paint

Fixing

Easy

Easy

Easy

Certification

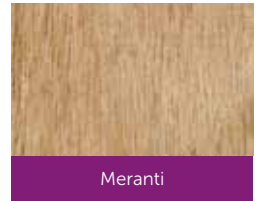




General Purpose Pine



Tasmanian Oak



Meranti

Botanical Name

Pinus Radiata

Eucalyptus, delegatensis (Alpine Ash), regnans (Mountain Ash) obliqua (Messmate Stringybark). The Tasmanian Oak profiles in the Porta range are Select Grade.

Shorea, Parashorea
The term meranti is applied to a large number of species of Shorea, which is a dominant hardwood genus in Malaysia

Key Features

Based on AS4785.1 the pine has been graded to Standard 5 Better and has an allowance for knots and resin pockets.

A durable hardwood. The colour ranges from "straw" to a light reddish brown. Please note, natural variations in grain, colour and texture are considered a characteristic of the species and are not recognised as a defect.

A durable medium density hardwood. Due to many species being marketed under the name Meranti, there will be some colour variation.

Classification

Softwood

Hardwood

Hardwood

Density

550 Kg/m³

700 Kg/m³

440-660 Kg/m³

Durability In Ground

Class 4
< 5 years

Class 4
< 5 years

Class 4
< 5 years

Durability Outside Above Ground

Class 4
7 years

Class 3
7-15 years

Class 4
7 years

Strength Group Seasoned SD1-8 (1 is strongest)

SD6

SD3 & SD4

SD6

Applications

Indoor
Suitable for wet areas

Indoor
Suitable for wet areas

Indoor
Suitable for wet areas

Finish

Stain or Paint

Stain or Paint

Stain or Paint
There is a wide colour variation with this species due to the number of species included under the term Meranti.

Fixing

Easy

Moderate
Pre Drill recommended to prevent splitting

Moderate

Certification



General Purpose Mouldings

Porta's general purpose timber mouldings are functional and versatile, ideal for a wide range of projects around the home and building space. The range includes edging, external corners and quad as well as more decorative and architectural shapes in a variety of different sizes.

Ovolo



Tri Quad



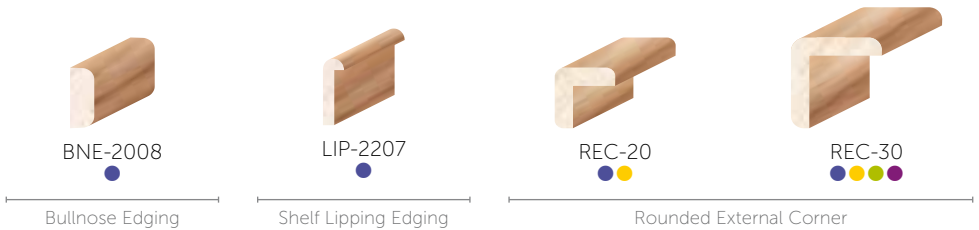
Quad



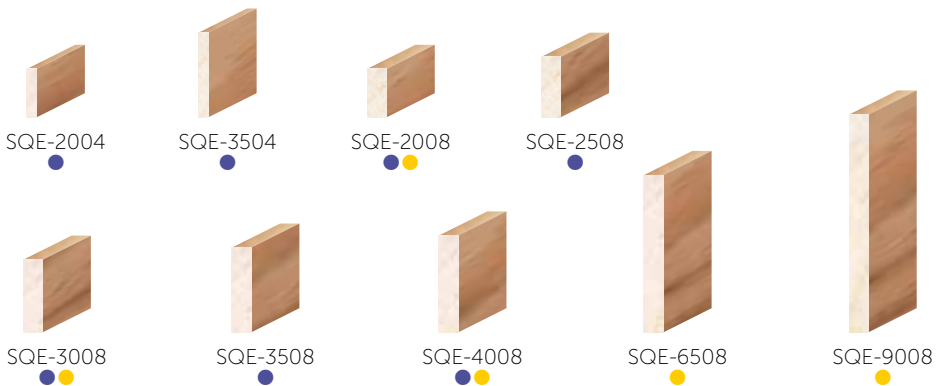
Edging & External Corners



Rounded Edging



Coverstrap



- Tasmanian Oak
- Clear Pine
- Treated Pine
- Primed FJ Pine
- White Wood
- Meranti
- Meranti Veneer
- General Purpose Pine

Windows & Doors

Porta's Window & Door Moulding range is your one-stop shop for a professional result whether the job is big, small or a major renovation. From finishing a window trim with beading to installing a new door jamb you will find a profile or style to match your project needs.

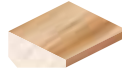
Window & Door Profiles



BGB-1209



BGB-1510



BGB-1912



BGB-3012



SGB-0808



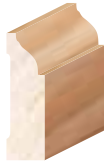
RGB-1109

Glass Bead (Bevel/Sash/Rounded)



FB-1806

Fly Bead



DS-4212

Door Stop



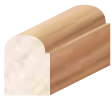
PTB-2009

Parting Bead



RTA-5030

Rounded T Astragal



STB-2015

Staff Bead

(Actual Height = 22mm)



STB-3015

(Actual Height = 32mm)



WM-3019

Wind Mould

Door Jamb

Availability may vary by state.



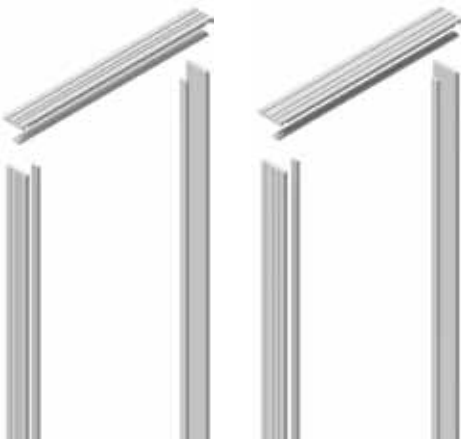
● DJS11019TOSL

Door Jamb 110 x 19mm
Loose Stop 30 x 12mm

● DJS12019TOSL

Door Jamb 120 x 19mm
Loose Stop 30 x 12mm

Single Door Jamb Set Flat (Loose Stop)



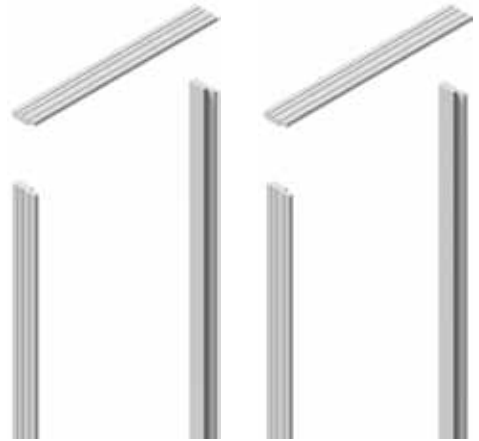
● DJF9218PIFP

Door Jamb 92 x 18mm
Loose Stop 30 x 12mm

● DJF11218PIFP

Door Jamb 112 x 18mm
Loose Stop 30 x 12mm

Door Jamb Set Flat (Loose Stop)



● DJSR923038PIFP

Door Jamb 92 x 30mm
Rebate 38 x 12mm

● DJSR1103038PIFP

Door Jamb 110 x 30mm
Rebate 38 x 12mm

Door Jamb Single Rebate

- Tasmanian Oak
- Clear Pine
- Treated Pine
- Primed FJ Pine
- White Wood
- Meranti
- Meranti Veneer
- General Purpose Pine

Dressed Boards

Porta's Dressed Board range includes an extensive range of dressed timber products including DAR's (Dressed All Round), panels, beams, and posts. DAR timber provides the foundation and structure for many renovation, carpentry and DIY projects. Dressed timber has been machined on all sides leaving a smooth surface.

Dressed All Round





DAR-11018



DAR-11518



DAR-13818



DAR-18518



DAR-3030



DAR-4230



DAR-7030



DAR-9030



DAR-18530



DAR-4242



DAR-7045



DAR-9045



DAR-7070



DAR-9090

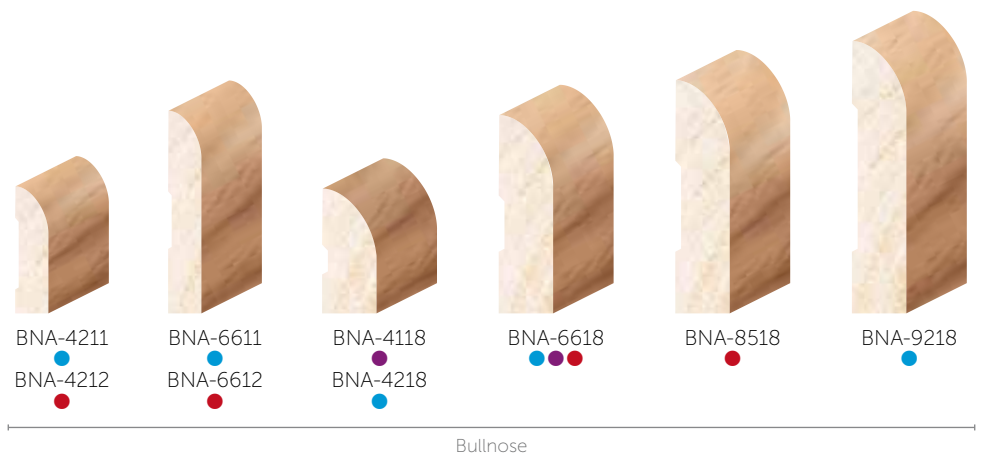


- Tasmanian Oak ● Clear Pine ● Treated Pine ● Primed FJ Pine
- White Wood ● Meranti ● Meranti Veneer ● General Purpose Pine

Architraves & Skirting

Porta's range of architrave and skirting help you create an overall framework for your home decorating theme. Skirtings helps protect your walls from everyday wear and tear while architraves have a functional purpose by hiding the gap between the wall lining, door jamb or window frame.

Architrave & Skirting Profiles





COA-4211

COA-4212



COA-6611

COA-6612



Colonial (TABMA: AS10)



COA-4118

COA-4218



COA-6618



COA-8518



COA-9118



COA-9218



COA-13818



Colonial (TABMA: AS2)



COA-6518



COA-9018



HSA-6618



HSA-9218



Colonial (Porta Spec 1)

Half Splayed

- Tasmanian Oak
- Clear Pine
- Treated Pine
- Primed FJ Pine
- White Wood
- Meranti
- Meranti Veneer
- General Purpose Pine

Architraves & Skirting

Pencil Round



PRA-4112

PRA-4211



PRA-6612

PRA-6611



PRA-4118

PRA-4218



PRA-6618

Picture Framing Profiles

Porta's range of picture framing profiles gives you the opportunity to customise any DIY framing project. Experiment with different profiles to give your project a unique style. Our timbers can easily be stained or painted to match or complement existing decor.



PFP-1827



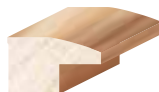
PFP-1919



PFP-2819



PFP-3019



PFP-3119



PFP-3521



PFP-4530

Porta Dowels have so many uses - from the purely functional, as a decorative material, to creating architectural design features to your home. Use for handrails, towel rails, coat holders, shelving supports, peg boards or for any hobbies and crafts - whatever the job, repair or idea, think dowel!

Dowels

HR-1206

HR-1507

HR-3012

FB-1806

Half Round

Fly Bead

DOW-04

DOW-06

DOW-08

DOW-09

DOW-12

DOW-16

(● Actual Size = 9.5mm)

(● Actual Size = 12.7mm)

(● Actual Size = 12.5mm)

DOW-19

DOW-22

DOW-25

DOW-30

(● Actual Size = 25.4mm)

(● Actual Size = 28.6mm)

DOW-35

DOW-43

DOW-50

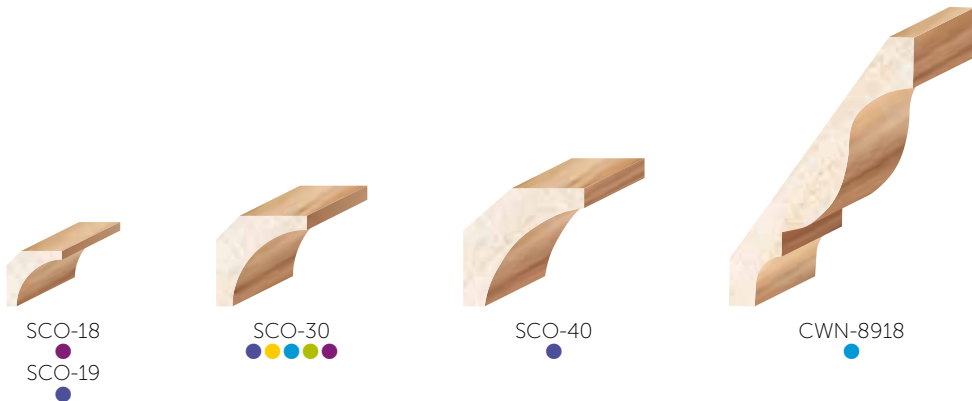
(● (Laminated & Finger Jointed))

● Tasmanian Oak ● Clear Pine ● Treated Pine ● Primed FJ Pine
 ● White Wood ● Meranti ● Meranti Veneer ● General Purpose Pine

Decorative Ceiling & Wall Trim

Porta's Decorative Ceiling & Wall Trims help you enhance and add texture to your room design. We offer a range of styles from classic to retro, colonial to modern so you can easily create the room you love. Experiment with different design profiles to reflect your unique style.

Cornice & Scotia



Insert Mouldings



Chair Rails, Picture Rails & Dado Rails



CR-6711



GCR-6525



PRT-4018



PR-6524



Chair Rails

Picture Rails



SHD-3015



SHD-4015



VD-3031



GD-6426



Dado Rails

Panel Mouldings



PM-1508



PM-3012



PM-3115



PM-3318



PM-4018



Contours Timber Lining Boards

Porta Contours is a range of interior timber linings that allows you to create calming warm atmospheres and vibrant textured designs. Porta Contours, is inspired by the contours of the beautiful Australian landscape and is available in 9 profiles.

Timber Lining Boards



LINA7821



Riverine



LINB7821



Cirque



LINC7821



Crest



LIND7821



Strata



LINE7812



Plateau-78



LINE3912



Plateau-39



LINI7821



Traverse



LINJ7821



Ridges



LINK7821

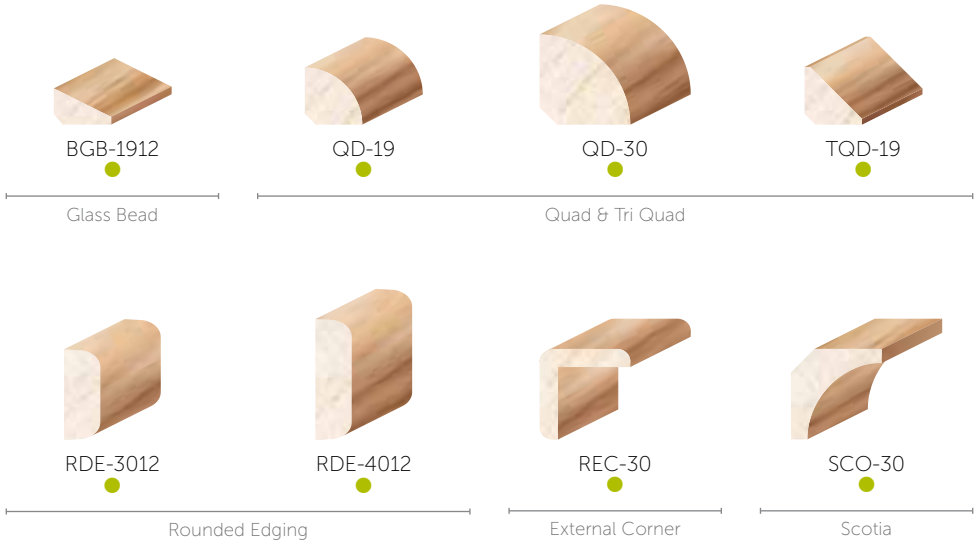


Valley

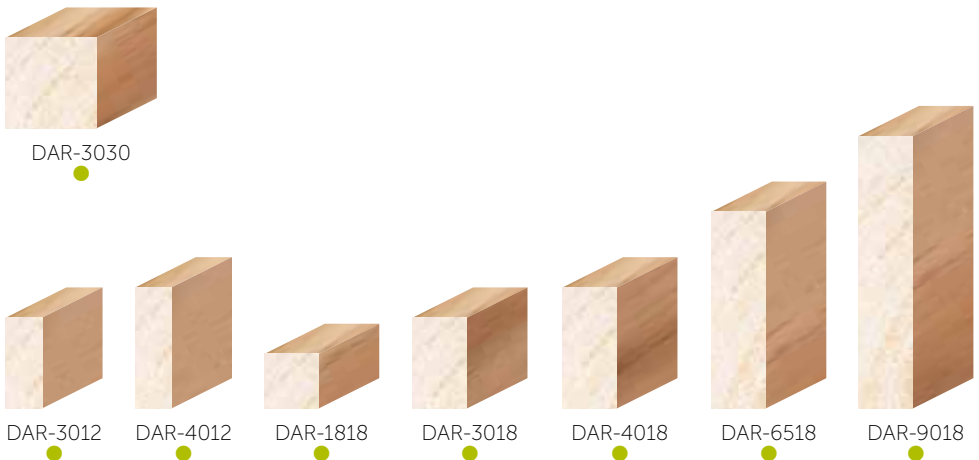
Outdoor Timber

Porta's treated mouldings are impregnated with special preservatives to provide long term protection against termites, rot, decay and weather. H3 rated they are ready to paint or stain and are ideal for a variety of external applications.

Outdoor Trim



Dressed All Round (DAR)



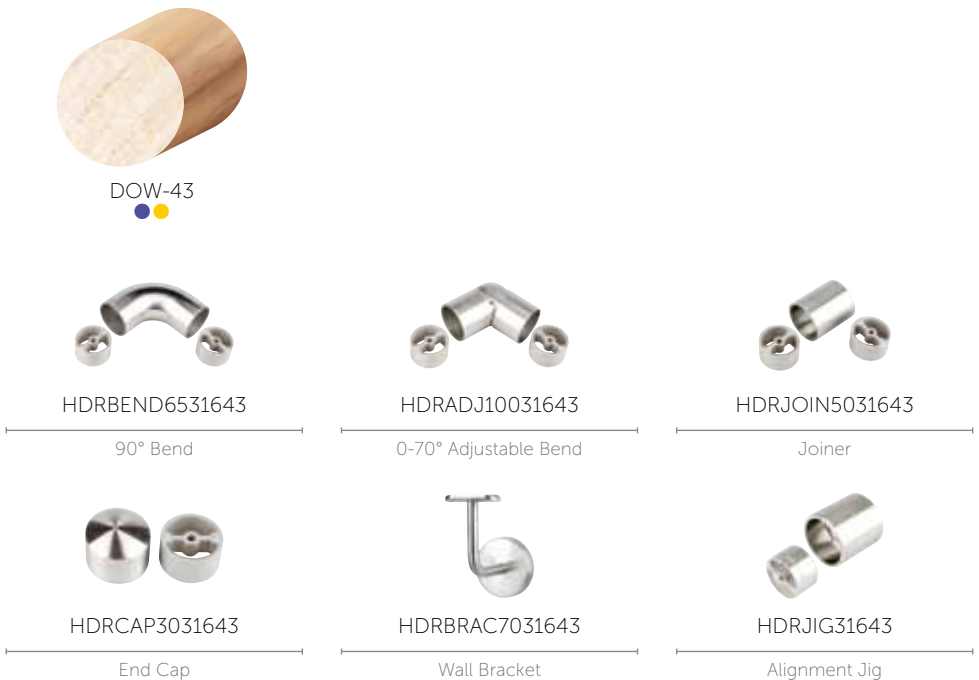
Handrails

Porta Handrails provide stylish and timeless designs that suit classic home designs as well as modern and contemporary architecture. Porta's handrails are ideal for assisted living rails, staircases, steps, rail access and perfect for home renovation projects. Also consider our round timber Dowel range for your handrail design, such as the 35-50mm sizes.

Handrails



Handrail System - 43mm Dowel (DOW-43) Hardware also available in Matt Black



Handrail System - 43mm Dowel (DOW-43)

The range of components allow for a broad range of applications. Before commencing to install the handrail system, check that there is sufficient handrail, components, adhesive and fasteners.

Handrail & Brackets

Measure the desired height of handrail, measure down 110mm to line up the bottom of the brackets. Mark the wall or use a laser level. Locate the brackets at a maximum of 900mm spacing.

The brackets must be securely fixed to the wall. Fixings should be selected so the installed handrail can resist at least a 60kg load. Preferably fix into a timber wall frame, directly into brickwork or onto a separate rail securely fixed to the wall. Use a Pan Head 12g x 50mm screw to fix through 10mm plasterboard and into a timber frame. If fixing directly into the wall lining, ensure fixing plugs are appropriate for the application and securely fixed.

Rest the handrail onto the brackets and mark the desired length. Cut the handrail to length (protect the cut line with masking tape and cut using an 80-100 tooth saw). Sand the cut edge forming a slight bevel with fine sand paper (220 grit).

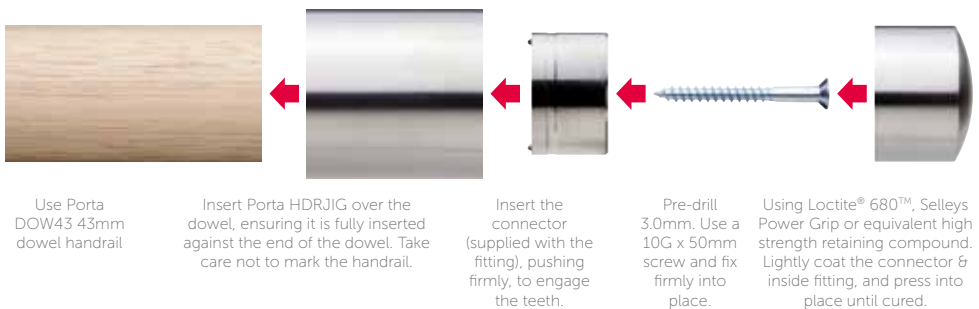


Connecting Fittings - Refer to diagram below

Locate the Alignment Jig onto the end of handrail, position the Connector inside the Jig and drill a 3.0mm diameter pilot hole. Use a 10 gauge x 50mm Countersunk screw to fix the connector to the handrail. Use a high strength slow cure retained compound adhesive (Loctite® 680™, Selleys Power Grip or equivalent high strength retaining compound) to adhere the components to the connectors (adhesive not provided). Make final alignment adjustments and allow to cure.

Finishing

Use masking tape to protect fittings and apply a coating finish.





f @portatimber @porta_timber
#knowandlovetimber

Porta Mouldings Pty Ltd
ABN 60 005 562 283
224-256 Heidelberg Rd
Fairfield Victoria 3078



1300 650 787 | sales@porta.com.au | www.porta.com.au

people who know & love **timber**