

**adbri** MASONRY  
working together



ARCHITECTURAL MASONRY

SA, TAS, VIC, NSW

# Adbri Masonry

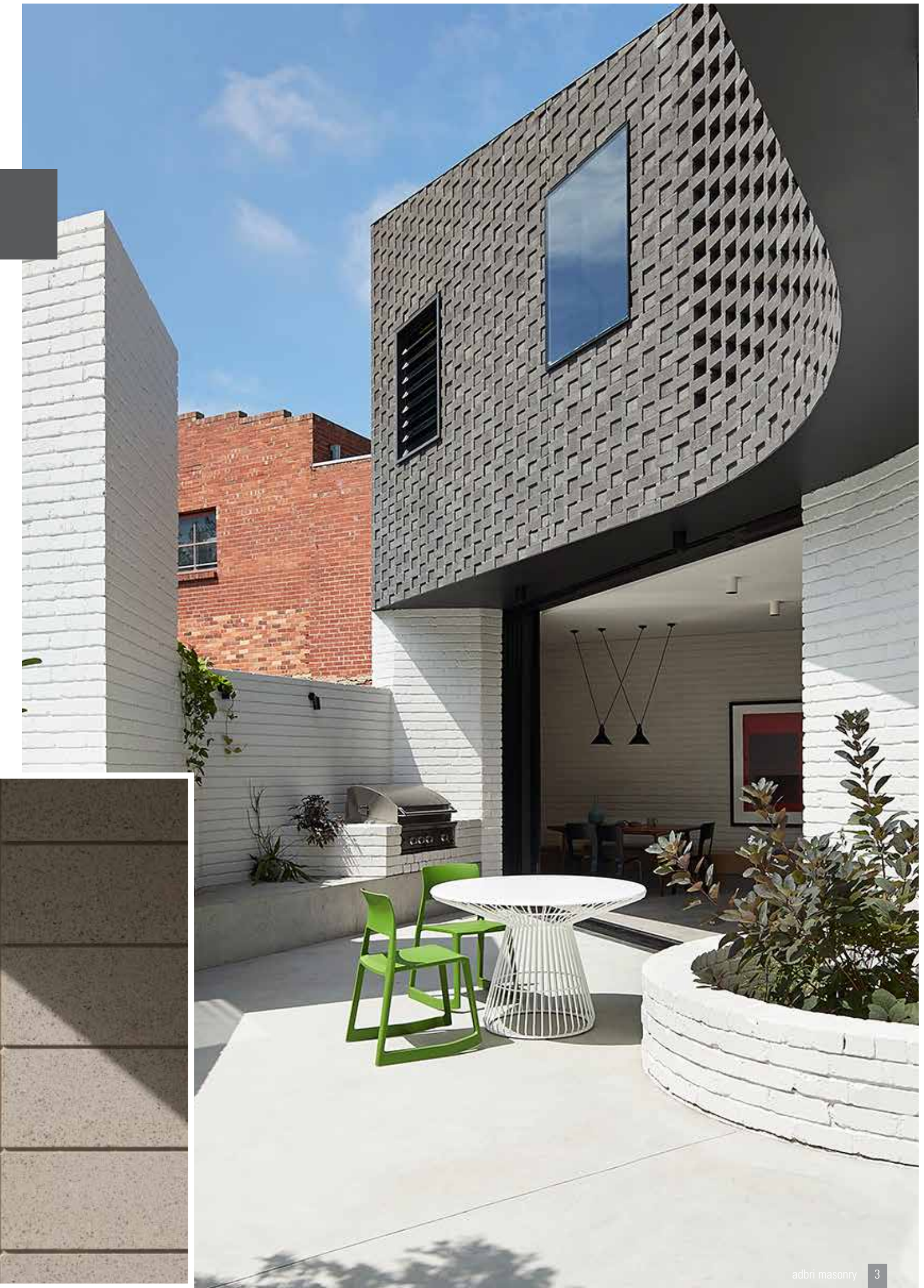
Adbri Masonry is Australia's leading masonry manufacturer supplying quality concrete bricks, blocks, pavers, retaining walls, erosion control products, and architectural masonry solutions throughout Australia. Adbri Masonry is a wholly owned subsidiary of Adelaide Brighton Limited, a leading integrated construction materials and lime producing group of companies and a member of the S&P/ASX 200 Index.

In addition to supplying a full collection of quality concrete building and landscaping products, there is a range of valuable benefits to working with Adbri Masonry including:

- ✓ Access to our Contracting Services Team (in-house design, supply, installation and certification team for commercial projects).
- ✓ Confidence that product lines are tested for quality in our N.A.T.A. accredited laboratory.
- ✓ Support from experienced in-house engineers who can provide technical advice and design solutions for civil, commercial and industrial projects.
- ✓ Service from dedicated architectural and engineering consultants.
- ✓ The benefit of dealing with knowledgeable local sales teams.
- ✓ The ability to create customised product and colour solutions specific to individual projects

*(conditions apply).*





# Architectural Masonry

*Adbri Masonry's diverse range of architectural masonry products offer designers a variety of colour, style and texture options for both residential and commercial applications. Many of these products are made to order and minimum quantities and lead times apply.*

## **Efflorescence Inhibitor**

Adbri Masonry Architectural Masonry products are manufactured with efflorescence inhibitors and colour fastening agents. These additives ensure reduced water absorption, minimisation of efflorescence, reduced mould and water staining and continued colour vibrancy.





**Architectural Brick**  
Smooth coloured bricks.



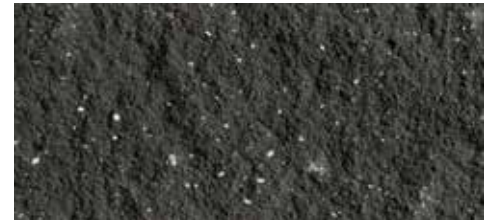
**Blended Brick**  
Attractive blend  
of two colours.



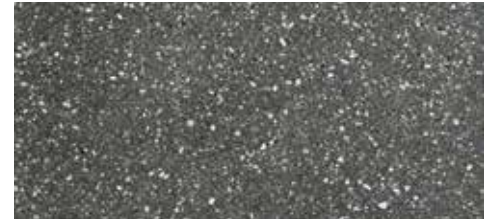
**Smooth Stone**  
Coloured blocks in their  
natural moulded state.



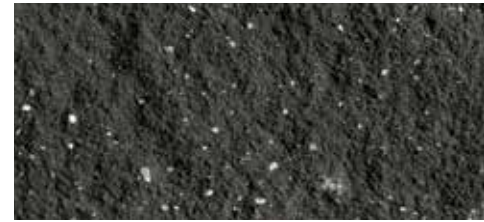
**Sandhurst Stone**  
Coloured blocks with  
a split texture.



**Designer Masonry Honed**  
Coloured blocks with  
a honed finish.



**Macquarie Stone**  
Large coloured blocks with  
a pitched texture.



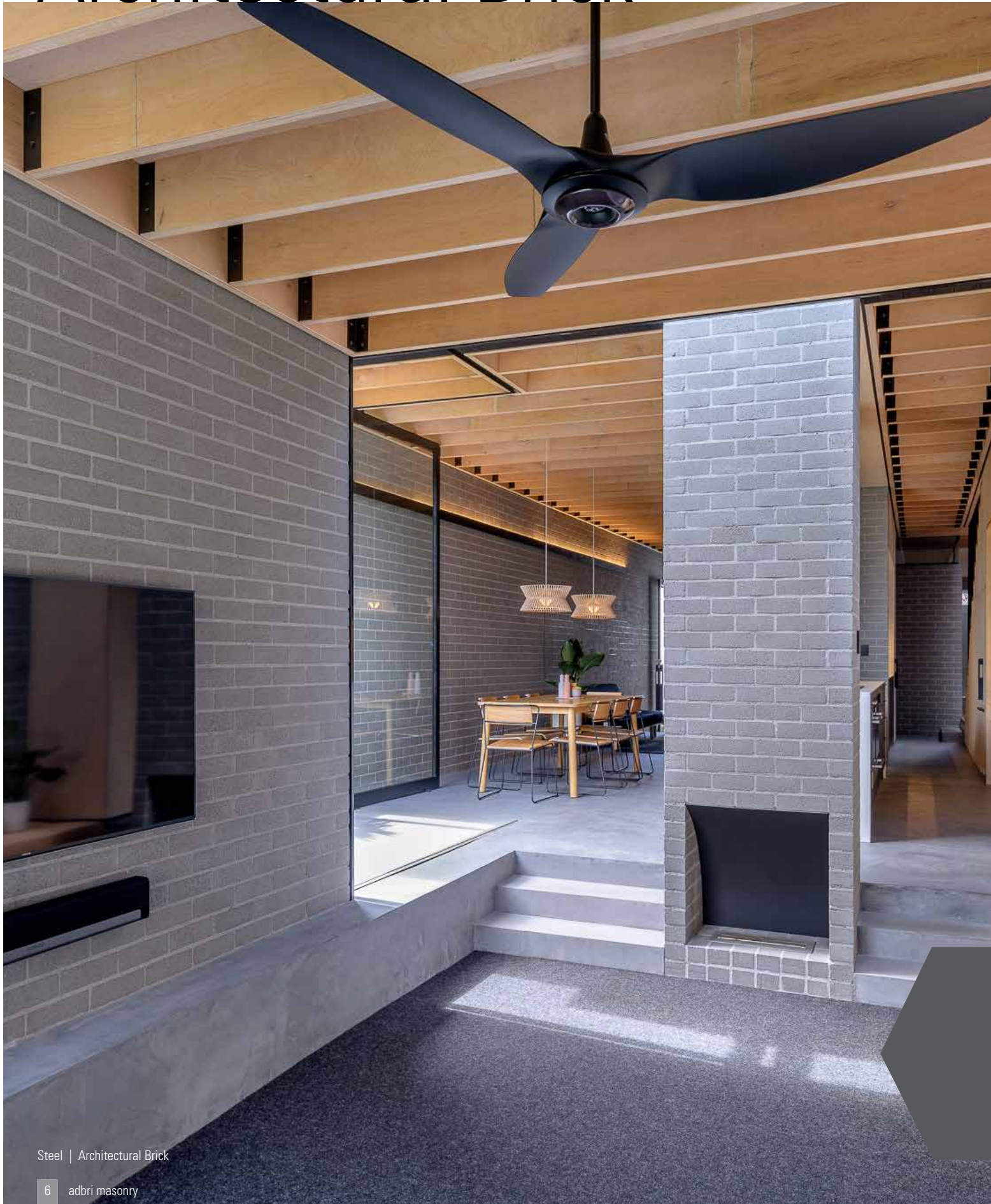
**Designer Masonry Shotblast**  
Coloured blocks with  
a shotblast finish



**Pitched Stone**  
Coloured blocks with  
a pitched texture.

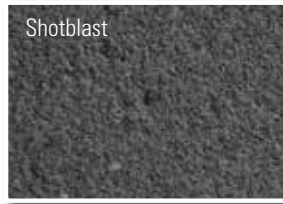
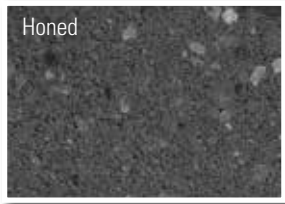


# Architectural Brick

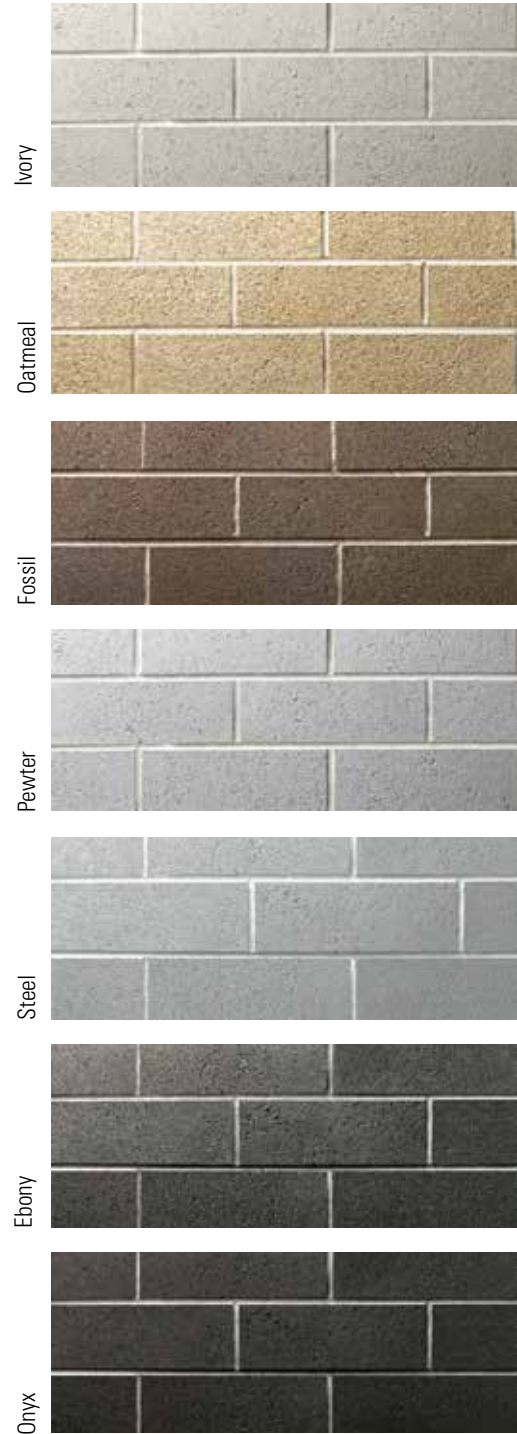




**Available Textures**



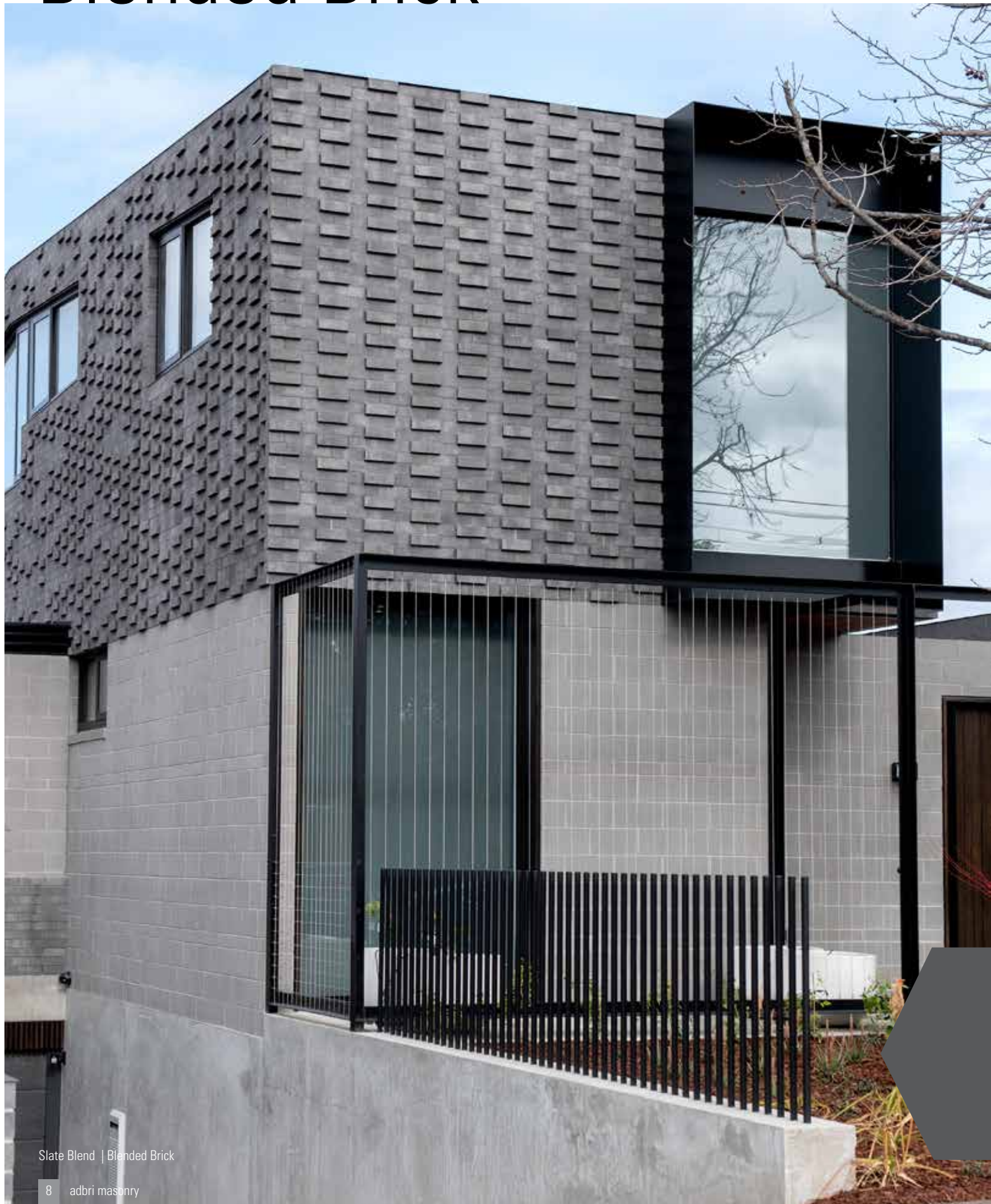
Architectural Brick



*Create distinctive designs with a superior series of brick face textures*

Enhance residential houses, multi-residential buildings and commercial developments with Adbri Masonry's range of Architectural Bricks. Available in a variety of colours and textural options **including the ability to 'treat' one or more sides of the brick**, these concrete bricks are an excellent alternative to traditional and other walling materials.

# Blended Brick







Slate Blend | Blended Brick



Blended Brick

Slate Blend



Coppertone



Ironstone



Driftwood



*Blending throughout individual bricks and batch for a great natural aesthetic*

The Blended Brick collection is a boutique range of heritage bricks produced locally in a specialty plant in Bendigo. With a focus on engineered uniqueness, no two bricks are the same with the expert blending of two solid colours veined throughout each brick with a natural precision.

# Smooth Stone





Ivory



Oatmeal



Bondi Blend



Bondi Blend Not Available in Tasmania

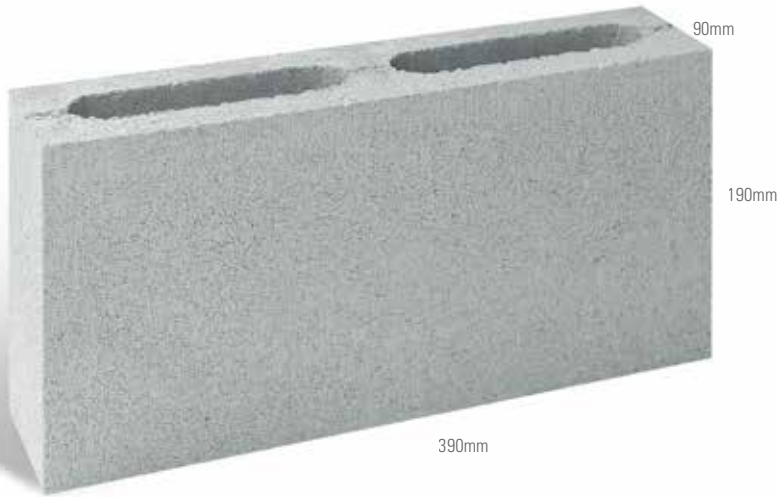
Fossil



Steel



Ebony



Smooth Stone

*\*Please refer to page 22-23 for all sizes.*

*Smooth Stone offers a modern and creative alternative to standard grey masonry*

These coloured concrete building blocks are offered in a range of different sizes. The smooth flat surface can be used to stunning effect either on their own or combined with other textured blocks or contrasting mortar.

# Sandhurst Stone





Fossil | 1/4 Height Sandhurst Stone



Sandhurst Stone

*\*Please refer to page 22-23 for all sizes.*

Ivory



Oatmeal



Bondi Blend



Bondi Blend Not Available in Tasmania

Fossil



Steel



Ebony



*Sandhurst Stone is a versatile masonry product adding a character to both contemporary and traditional designs*

Featuring a natural raw face, these traditional split face coloured concrete building blocks are ideal for residential and commercial walling projects. Available in a variety of block sizes including the 1/4 height blocks, Sandhurst Stone is a versatile solution in the creation of distinctive internal or external pillars, fences and walls.

# Pitched Stone





Sunstone | Pitched Stone

Only available in Victoria.



Pitched Stone

\*Please refer to page 22-23 for all sizes.

Ivory



Oatmeal



Bondi Blend



Bondi Blend Not Available in Tasmania

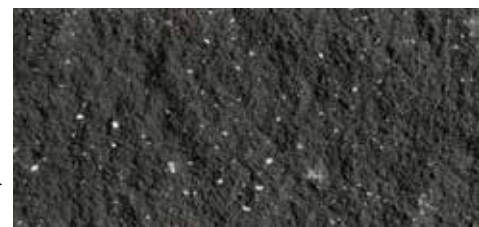
Fossil



Steel



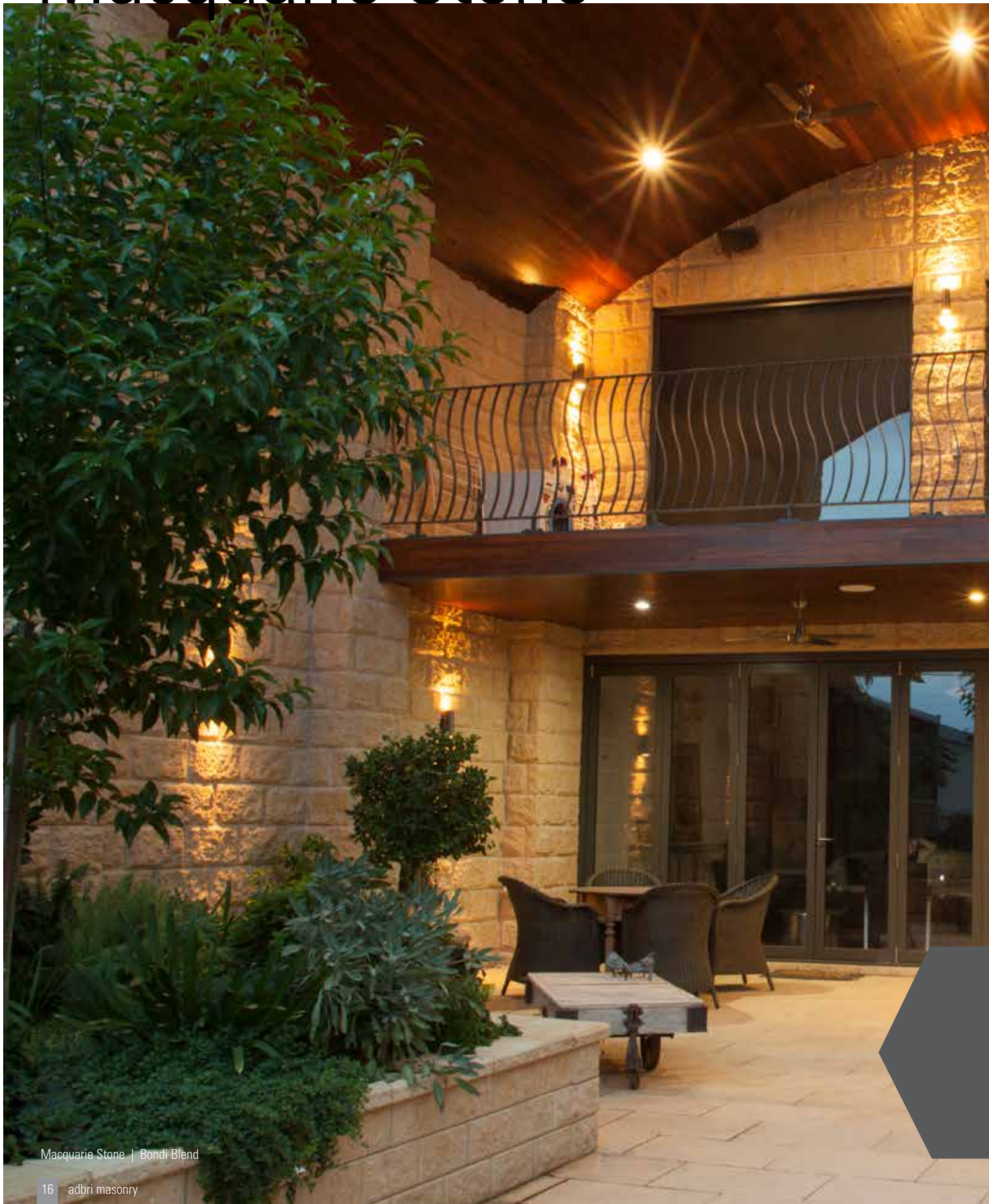
Ebony



Each Pitched Stone block contains a unique finish allowing for the creation of natural aesthetics in innovative project designs

Pitched stone blocks feature a process that crafts a highly detailed, roughly textured block face to create an authentic characteristic to houses, walls and concrete block fences. Used in both contemporary and traditional projects with stunning effect, Pitched Stone can be used on its own or combined with Adbri Masonry's Smooth Stone for a truly distinctive finish.

# Macquarie Stone







Charcoal | Macquarie Stone



Ivory



Oatmeal



Bondi Blend



Ebony



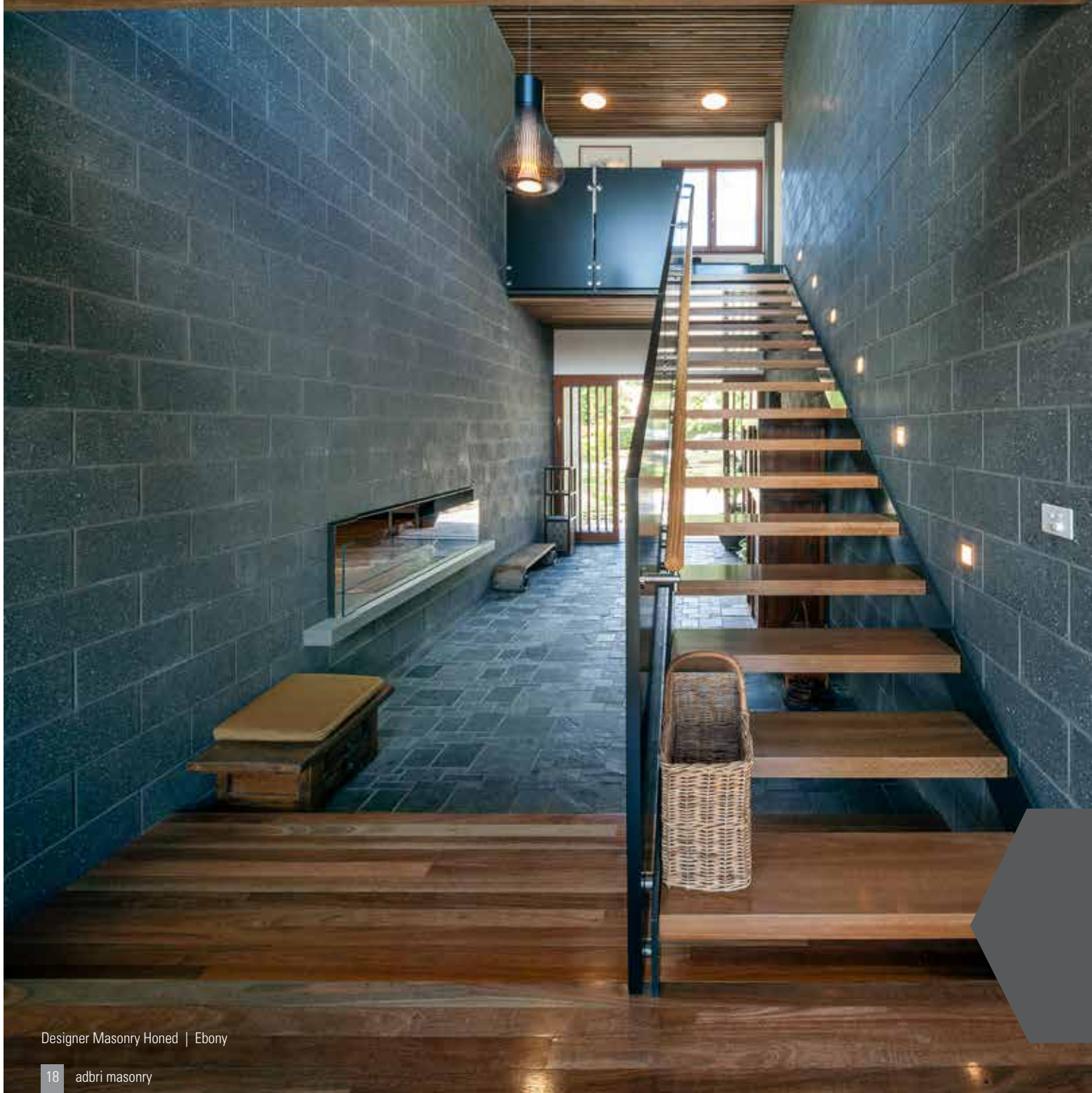
Macquarie Stone

*\*Please refer to page 22-23 for all sizes.*

*Think big with Macquarie Stone, our largest architectural coloured block.*

Equivalent to two standard bricks in length and three standard bricks in height, make a statement with our largest coloured concrete masonry block. Available in smooth bevelled, pitched or split face, Macquarie Stone will demand attention and add dimension and character to country style residential homes, multi-residential buildings and commercial developments.

# Designer Masonry Honed





Golden Glaze

River Gravel

Ivory



Oatmeal



Fossil



Steel



Ebony



Designer Masonry Honed

*\*Please refer to page 22-23 for all sizes.*

### Designer Masonry Honed

The honing process cuts the surface layer of the block to reveal the natural stone and aggregate within each block. The end result is a near polished, smooth surface texture which when used individually or combined with other surface textures or mortar colours, will assist in the visual appeal of contemporary designs.

# Designer Masonry Shotblast





Designer Masonry Shotblast

*\*Please refer to page 22-23 for all sizes.*

Golden Glaze

River Gravel

Ivory



Oatmeal



Fossil



Steel



Ebony



### Designer Masonry Shotblast

The light shot blast process removes the smooth face of the block and exposes the natural stones and aggregates within each unit. This process applies a mildly abrasive texture to the face of the block which provides a natural aesthetic to internal or external walls.

# Colour Range

## Architectural Brick

## Sandhurst, Pitched or Macquarie Stone

## Smooth Stone

Ivory



Oatmeal



Bondi Blend



Fossil



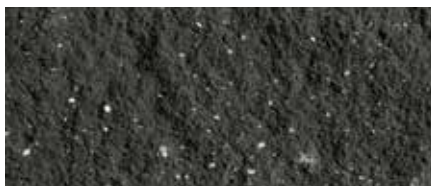
Pewter



Steel



Ebony

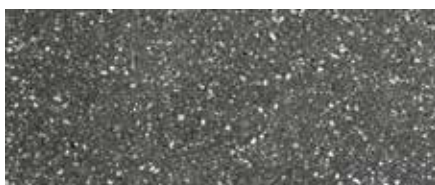


Onyx



All colours in smooth stone are also available in shot-blast finish.

*Designer Masonry Honed / Shotblast  
with Golden Glaze Aggregate*



*Designer Masonry Honed / Shotblast  
with River Gravel Aggregate*



*Blended Brick*

*Ironstone*



*Driftwood*



*Coppertone*



*Slate Blend*



*Please call 1300 365 565 or contact your  
local Adbri Masonry sales representative  
for more information on colour.*

# The Range

| PRODUCT             | Type            | Description                       | Dimensions (mm)<br>L x H x W | No per m <sup>2</sup> | State |     |     |    |
|---------------------|-----------------|-----------------------------------|------------------------------|-----------------------|-------|-----|-----|----|
|                     |                 |                                   |                              |                       | TAS   | NSW | VIC | SA |
| Architectural Brick | 120.715         | Smooth Coloured Brick             | 230 x 110 x 76               | 52                    | •     | •   | •   |    |
| Smooth Stone        | 10.01           | Full Length Hollow                | 390 x 190 x 90               | 12.5                  | •     | •   | •   | •  |
|                     | 10.02           | 3/4 Length Hollow                 | 290 x 190 x 90               |                       | •     |     | •   |    |
|                     | 10.03           | 1/2 Length Hollow                 | 190 x 190 x 90               |                       | •     |     | •   |    |
|                     | 10.04           | 1/4 Length Hollow                 | 90 x 190 x 90                |                       |       |     | •   |    |
|                     | 10.31           | Full Length Solid*                | 390 x 190 x 90               | 12.5                  | •     | •   | •   | •  |
|                     | 10.33           | 1/2 Length Solid                  | 190 x 190 x 90               |                       |       |     | •   |    |
|                     | 10.83           | Full Length Solid 1/2 Height      | 390 x 90 x 90                | 25                    |       |     | •   |    |
|                     | 15.01           | Full Length Hollow                | 390 x 190 x 140              | 12.5                  | •     |     |     | •  |
|                     | 15.42^          | Full Length Hollow                | 390 x 190 x 140              | 12.5                  | •     | •   | •   |    |
|                     | 15.22           | Corner Hollow                     | 340 x 190 x 140              |                       | •     |     | •   |    |
|                     | 15.03           | 1/2 Length Hollow                 | 190 x 190 x 140              |                       | •     |     | •   |    |
|                     | 20.01           | Full Length Hollow                | 390 x 190 x 190              | 12.5                  | •     |     |     | •  |
|                     | Sandhurst Stone | 20.42^                            | Full Length Hollow           | 390 x 190 x 190       | 12.5  | •   | •   | •  |
| 20.03               |                 | 1/2 Length Hollow                 | 190 x 190 x 190              |                       | •     |     | •   |    |
| 10.101              |                 | Full Length*                      | 390 x 190 x 90               | 12.5                  |       | •   | •   | •  |
| Pitched Stone       | 10.103          | 1/2 Length                        | 190 x 190 x 90               |                       | •     |     | •   |    |
|                     | 10.105          | 3/4 Split R/F End                 | 290 x 190 x 90               |                       | •     |     | •   |    |
|                     | 10.109          | 1/2 Height                        | 390 x 90 x 90                | 25                    | •     | •   | •   | •  |
|                     | 10.117          | 1/4 Height                        | 390 x 40 x 90                | 50                    | •     | •   | •   | •  |
|                     | 15.101          | Full Length                       | 390 x 190 x 140              | 12.5                  | •     | •   | •   |    |
|                     | 15.103          |                                   |                              |                       |       |     |     |    |
|                     | 20.121          | Full Length                       | 390 x 190 x 190              | 12.5                  | •     | •   | •   | •  |
|                     | 10.249          | ¾ Split Rock Face End Cornerstone | 335 x 248 x 105              |                       | •     |     | •   | •  |
|                     | 20.103          | 1/2 Length                        | 190 x 190 x 190              |                       | •     |     | •   |    |
|                     | 10.111          | Full Length*                      | 390 x 190 x 90               | 12.5                  |       | •   | •   |    |
| Pitched Stone       | 10.113          | 1/2 Length                        | 190 x 190 x 90               |                       | •     |     | •   |    |
|                     | 10.115          | 3/4 Split R/F End                 | 290 x 190 x 90               |                       | •     |     | •   |    |
|                     | 20.111          | Full Length                       | 390 x 190 x 190              | 12.5                  | •     | •   | •   |    |
|                     | 20.113          | 1/2 Length                        | 190 x 190 x 190              |                       | •     |     | •   |    |



| PRODUCT                            | Type   | Description                  | Dimensions (mm)<br>L x H x W | No per m <sup>2</sup> | State |     |     |    |
|------------------------------------|--------|------------------------------|------------------------------|-----------------------|-------|-----|-----|----|
|                                    |        |                              |                              |                       | TAS   | NSW | VIC | SA |
| Designer Masonry Honed / Shotblast | 10.01  | Full Length Hollow           | 390 x 190 x 90               | 12.5                  | •     | •   | •   | •  |
|                                    | 10.31  | Full Length Solid*           | 390 x 190 x 90               | 12.5                  | •     | •   | •   | •  |
|                                    | 10.83  | Full Length Solid 1/2 Height | 390 x 90 x 90                | 25                    | •     | •   | •   | •  |
|                                    | 15.01  | Full Length Hollow           | 390 x 190 x 140              |                       |       | •   |     |    |
|                                    | ^15.42 | Full Length Hollow           | 390 x 190 x 140              | 12.5                  | •     | •   | •   | •  |
|                                    | 15.22  | Corner Hollow                | 340 x 190 x 140              |                       | •     |     | •   | •  |
|                                    | 20.01  | Full Length Hollow           | 390 x 190 x 190              | 12.5                  |       | •   |     |    |
|                                    | ^20.42 | Full Length Hollow           | 390 x 190 x 190              | 12.5                  | •     | •   | •   | •  |

| PRODUCT         | Type   | Description                       | Dimensions (mm)<br>L x H x W | No per m <sup>2</sup> | Smooth | Sandhurst | Pitched | Honed/<br>Shotblast | Available In      |
|-----------------|--------|-----------------------------------|------------------------------|-----------------------|--------|-----------|---------|---------------------|-------------------|
| Macquarie Stone | 10.248 | Full Length                       | 470 x 248 x 105              | 8                     |        | •         | •       |                     | NSW, VIC, SA, TAS |
|                 | 10.249 | ¾ Split Rock Face End Cornerstone | 335 x 248 x 105              |                       |        | •         | •       |                     | NSW, VIC, SA, TAS |
|                 | 10.250 | 1/2 Length                        | 230 x 248 x 105              |                       |        | •         | •       |                     | NSW, VIC, SA, TAS |
|                 | 10.252 | Full Length Bevelled              | 470 x 248 x 105              | 8                     | •      |           |         | •**                 | NSW, VIC, SA, TAS |
|                 | 10.253 | 1/2 Length Bevelled               | 230 x 248 x 105              |                       | •      |           |         | •**                 | NSW, VIC, SA, TAS |
| Cornerstones    | 10.LQ  | Smooth Cornerstone                | 390 x 190 x 190 x 90         |                       | •      |           |         | •                   | NSW, VIC, SA, TAS |
|                 | 10.LQS | Split Cornerstone                 | 390 x 190 x 190 x 90         |                       |        | •         |         |                     | NSW, VIC, SA, TAS |
|                 | 10.LQP | Pitched Cornerstone               | 390 x 190 x 190 x 90         |                       |        |           | •       |                     | NSW, VIC, SA, TAS |
|                 | 10.620 | Bevelled Cornerstone              | 470 x 248 x 235 x 105        |                       | •      |           |         |                     | NSW, VIC, SA, TAS |
| Sill Blocks     | 10.39  | Sill Block                        | 190 x 190 x 90               |                       | •      |           |         |                     | NSW, VIC, SA, TAS |
|                 | 20.39  | Sill Block                        | 190 x 190 x 190              |                       | •      |           |         |                     | TAS               |
| Capping Tile    | 50.31  | Capping Tile                      | 390 x 190 x 40               |                       | •      |           |         |                     | NSW, VIC, SA, TAS |
|                 | 15.71C | Capping Tile                      | 390 x 140 x 40               |                       | •      |           |         |                     | NSW, SA, TAS      |

### Notes

- > Adbri Masonry Architectural Masonry is made to order, please remember to check lead times when placing your order.
- > Adbri Masonry Designer Masonry requires a secondary manufacturing process that requires additional lead time to Adbri Masonry's other Architectural Masonry products.
- > Quantities per pallet may vary from state to state, please refer to your Adbri Masonry representative for further details.
- > Additional fractions can be made by cutting, splitting or bolsting blocks on site, which minimises batch variation.
- > Custom colours and/or aggregates may be available on request. Please consult your Adbri Masonry representative. (Conditions apply)

\*1 in 8 is a universal block for fractions

^8 blocks in every pallet comes with a closed end.

\*\*Secondary process is applied to the reverse side of these blocks

# Technical Information

## **Standards**

All Adbri Masonry Architectural Masonry products are manufactured to Australian Standards AS 4455 Masonry Units and Segmental Pavers and tested for compliance with AS 4456 Masonry Units and Segmental Pavers - Methods of Test. Mortar should be accurately batched and conform to AS3700.

## **Control Joints**

Should extend for the full height of the wall and be spaced at a maximum distance of 6 metres apart where walls are not interrupted by full height doorways or window openings (refer Australian Standards).

## **Joint Reinforcement**

Masonry mesh is recommended at height intervals of 600mm, and in the two courses above and below all openings. Lap mesh at least 150mm at all joints and intersections, except at control joints where a slip joint must be provided. For 90mm walling use 50mm reinforcement mesh and for 190mm walling use 150mm reinforcement mesh.

## **General Guidelines**

All Adbri Masonry Architectural Masonry products should be laid dry, so covering on site is recommended. Whenever work is stopped, the tops of walls should be covered to protect from moisture during construction. All mortar joints should be allowed to set to 'thumb print' hardness before tooling. Brush away excess mortar with a semi-stiff brush at the end of each day's work.

## **Cleaning**

Care should be taken to keep stone as clean as possible during laying. Adbri Masonry recommend the guidelines within CMAA document MA41 Cleaning and Maintenance of Concrete Masonry Structures.

## **Fire Resistance**

Australian Standard AS 3700 Masonry Structure sets out the method for determining fire resistance to walls. The Building Code of Australia requires walls to be designed for insulation, integrity and structural adequacy. Adbri Masonry have had extensive CSIRO testing for FRL and subsequently have a large range of masonry products meeting the requirements of the building code. Refer to the Adbri Masonry Fire and Sound brochure.

## **Sound Transmission**

The statutory requirements for sound attenuation are contained in the Building Code of Australia (BCA) which requires that some walls of some buildings be capable of preventing a large proportion of incident sound from passing from one wall side to the other. These requirements are set out in Section F5 of the BCA. Refer to Adbri Masonry Fire and Sound brochure for more information.

## **Ordering**

Adbri Masonry Architectural Masonry products are manufactured from natural materials and will vary in colour and texture from batch to batch. All products must be ordered at the one time to ensure that they are supplied from the same batch. Product should be blended from different pallets to ensure an even mix of colour throughout any given wall.

## **Claims**

All product must be inspected prior to installation to ensure satisfaction of colour and texture. No claims will be accepted once product has been installed.





BRICKS | BESSER® BLOCKS | PAVERS | RETAINING WALLS

**Free pallet collection service freecall 1800 674 961 or drop pallets back to place of purchase or lodge your pallet pick up online at [adbri.com.au](http://adbri.com.au)**

Pallets remain Adbri Masonry property. Please telephone us for collection of pallets and keep pallets empty and stacked in a safe and accessible area for collection.

We will not accept any returns or claims more than 7 days after delivery or after products have been installed. We will not accept returns unless transport arrangements have been agreed and the products are in 'as received' condition and accessible for collection. We will only accept returns as follows:

- Paving and Retaining Walls - returns accepted only in full pallets stacked in original configuration.
- No returns accepted for any made to order product.

The information in this brochure is to be used only with the specific Adbri Masonry products shown. All images, designs, drawings and other depictions of the installation and/or use of products in this document are examples only, and should not be relied on. To the maximum extent permitted by law, in no circumstances will Adbri Masonry be liable to any party for any direct, indirect, consequential, incidental, special or economic loss, damage or injury (which may include loss of profits, loss or damage to goodwill, direct or indirect loss or damage to equipment or property, loss or damage arising from accident, loss of profits or other commercial losses) suffered or incurred by that party.

Adbri Masonry makes no express warranties or representations regarding the products, designs or information set out in this document, and to the maximum extent permitted by law, excludes all representations, warranties, terms, conditions and guarantees regarding the products and designs and information set out in this document, and any other goods or services supplied or provided by Adbri Masonry to the customer that are implied by law (including the general law) or custom. While Adbri Masonry does not exclude, restrict or modify any guarantees, warranties and conditions implied by applicable laws that cannot lawfully be excluded, restricted or modified, including but not limited to those set out in the Australian Consumer Law, to the maximum extent permitted by law Adbri Masonry's liability to any party for a breach of any such applicable non-excludable terms is limited to, at the option of Adbri Masonry: (a) in the case of goods - replacement of the goods, the supply of equivalent goods, repair of the goods, payment of the cost of replacing the goods or acquiring equivalent goods, or payment of the costs of having the goods repaired; and (b) in the case of services - the supply of the services again or payment of the cost of having the services supplied again.

## Contact Us

 [adbri.com.au](http://adbri.com.au)  **1300 365 565**  [enquiries@adbri.com.au](mailto:enquiries@adbri.com.au)

## Follow us on Social Media

 [AdbriMasonryAus](https://www.facebook.com/AdbriMasonryAus)  
 [@adbri\\_masonry](https://www.instagram.com/adbri_masonry)  
 [adbri\\_masonry](https://www.pinterest.com/adbri_masonry)  
 [AdbriMasonryAus](https://www.youtube.com/AdbriMasonryAus)

Architectural Masonry Brochure - SA, TAS, VIC, NSW

September 2019

ABM 5053

Adbri Masonry Pty Ltd

ABN: 31 009 687 521

The Adbri Masonry logo is a registered trademark of Adbri Masonry Pty Ltd and its related entities.

**adbri**MASONRY  
working together